



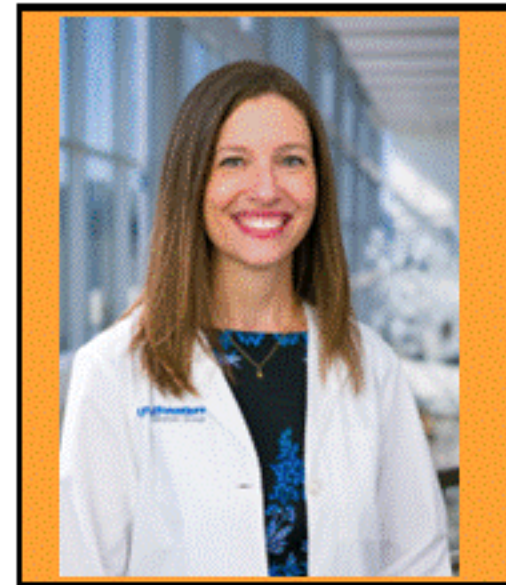
**F · L · A · S · H**  
FRIDAY SEMINARS IN SPEECH, LANGUAGE, AND HEARING

Bruton Conferences are Sponsored by the David Bruton, Jr. Endowed Lecture Series in Communication Disorders

## Dr. Laura Toles, PhD CCC-SLP

### **Factors Associated with the Etiology and Pathophysiology of Phonotrauma**

**Abstract:** Phonotrauma (i.e., benign vocal fold lesions such as vocal fold nodules) is one of the most frequently occurring behavioral voice problems. Once phonotraumatic lesions are present, they are likely to recur and/or persist over time and can impact an individual's livelihood and quality of life. There is a general consensus that phonotrauma can stem from cumulative vocal fold tissue damage and/or reaction to persistent tissue inflammation, but it is unclear what personal idiosyncrasies or vocal behaviors are associated with the onset versus the reaction to these lesions. A better understanding of the behavioral, psychological, and physiological underpinnings associated with the development and pathophysiology of phonotrauma is needed to improve early identification of risk, develop risk mitigation strategies, and inform treatment approaches. This presentation will introduce how daily voice use behaviors, personality, and their interaction differ between patients with phonotrauma and vocally healthy matched controls. Associations between acoustic metrics, vocal fold kinematics, and aberrant phonation presentations that are considered to be a precursor to phonotrauma will be presented. Barriers to treatment and recovery of phonotrauma will also be described.



**Bio:** Laura Toles is the PI of the Voice Behavior and Rehabilitation Lab and is an Assistant Professor in the Department of Otolaryngology – Head and Neck Surgery at the UT Southwestern Medical Center where she works as a clinician scientist. Her research focuses on the role that psychological, behavioral, and physiological factors have in the development and rehabilitation of hyperfunctional voice disorders. She holds a PhD in Rehabilitation Sciences from the Massachusetts General Hospital Institute of Health Professions and conducted research at the MGH Voice Center. She has been a practicing speech-language pathologist with a specialty in treating voice disorders for 15 years.

#### **Date/Time:**

Friday, February 14th

@ 12 noon to 1 pm

#### **Location**

MS Teams and Room CD A229